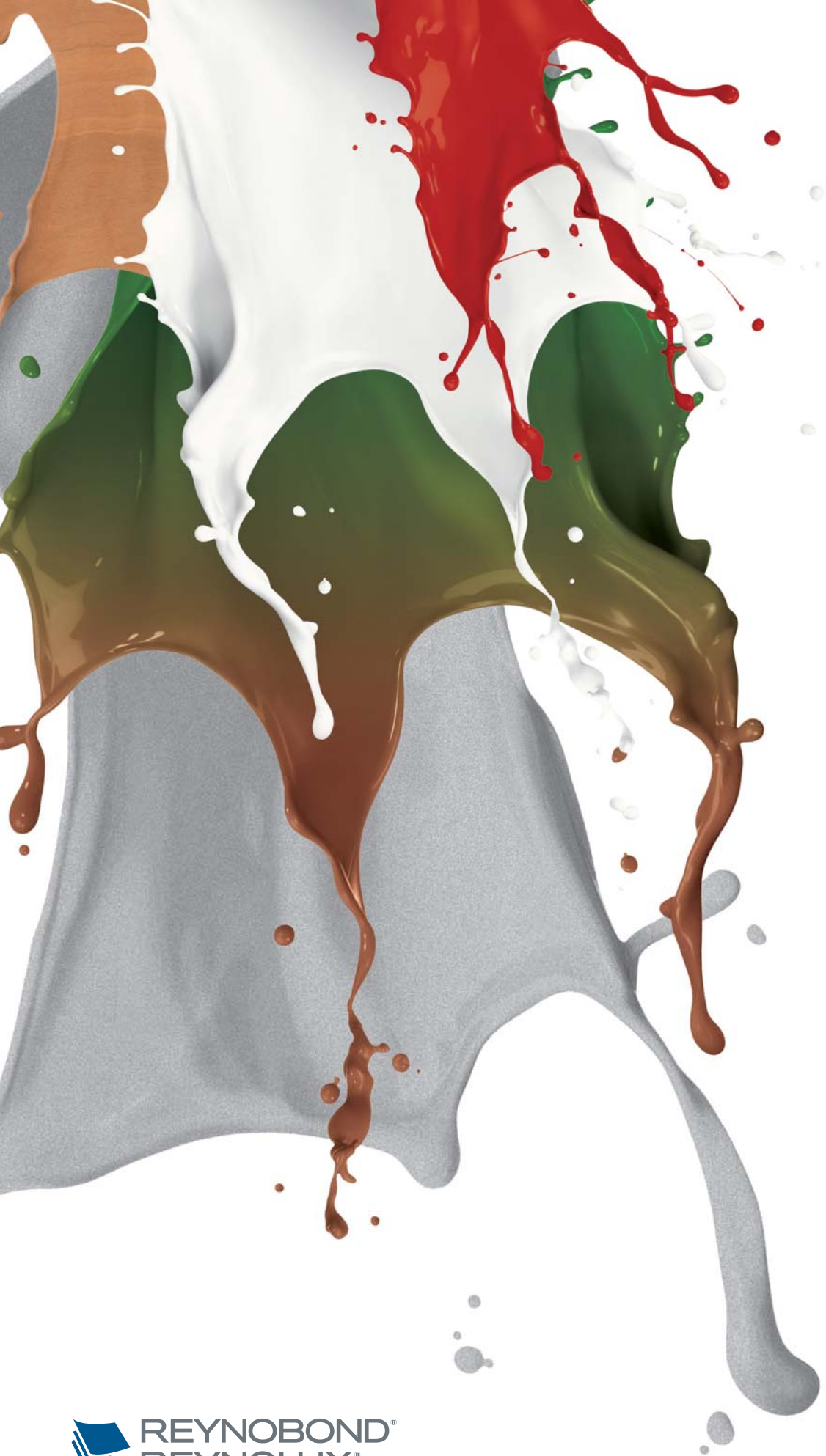


ARCHITECTURE

STANDARD FINISHES



Bold Ideas Require Bold Finishes



In the architecture and building market, nothing's more important than a bold idea being implemented successfully. That's why around the world, architects rely on Reynobond® and Reynolux® panels to amplify the visual impact of their ideas. Offering long-term, cost-effective, consistent solutions, these panels are durable, weather resistant, lightweight, flexible, and easy to fabricate and maintain. They're available in a nearly limitless array of stock and custom finish options.

Use this color chart for a closer look at our standard color offerings (stocked as Reynobond panel inventory, pre-finished coil* and 0.40" Reynolux flat sheet), and envision a world of possibilities for making your next bold idea even bolder. Plus, if you don't immediately see the color you need, our custom color matching will get you exactly where you need to be.

Colorweld® 500/500XL Finishes

High-performing, coil-coated Colorweld 500 and Colorweld 500XL finishes allow color matching at the highest uniformity and quality. They feature 70% Kynar 500®/Hylar 5000® polyvinylidene fluoride (PVDF) resins with fluoropolymer technology, providing excellent flexibility and film adhesion for forming, with superior resistance to humidity, impact, salt spray, pollution and abrasion. With a 30-year finish warranty, they're considered the premier architectural coatings for metal. And, because Colorweld 500XL finishes are compatible with PPG's DURAPREP® Prep™ 400 graffiti remover system, your designs can be protected from graffiti and vandalism in any environment.

Design Line™ Nature-Inspired Finishes

Inspired by Mother Nature, our Design Line finish system offers a variety of striking, natural-material-based design choices that feature all the benefits of Reynobond aluminum composite material. These 3-coat advanced polymer coatings resist sun, extreme temperatures and even saltwater, making them ideal for outdoor applications.

PrismFX™ Color-Shifting Finishes

PrismFX finishes can give your building a look as dynamic as your design. This 3-coat innovative coating creates subtle color shifts in different lighting conditions when viewed from different angles, so a building that appears green, blue or silver in the morning can shift to copper, violet or gold in the afternoon. Excellent flexibility and film adhesion for forming are delivered by this high-performance paint system, while also being resistant to humidity, impact, salt spray, pollution and abrasion, making it suitable for all outdoor architectural applications and a wide range of other specialty uses.

Natural Metal Offerings

Our natural metal composite panels give you all the functional benefits of Reynobond panels along with the aesthetic impact that can only come from nature's finest elements. Our brushed aluminum, zinc, stainless steel and copper give you bold options for interior and exterior walls and accents, while allowing you to incorporate curves, angles and other design elements not possible with heavy plate and sheet.

Stay Up to Date on Stock

Visit reynobond.com/stockinglist for our current listing of standard color offerings. Check back often as we adjust our finishes and sizes to meet your demands.

Custom Color Matching Services

Don't see the color you're looking for? We can help match any color you desire. Email your custom color match request to color.matching@alcoa.com and see the possibilities of high-performing color matches for Reynobond and Reynolux panels.

Request a Sample

To receive a sample of any of the finishes shown within this booklet, please call 800.841.7774 and ask for our Sample & Literature Department. If you prefer, you can email your request to samples.literature@alcoa.com.

*Used to produce Reynobond panels

Colorweld® 500

30-year warranty
AAMA 2605

SERIES ONE Standard Solid Finishes

All Colorweld 500 Series One finishes, with the exception of Eastman Blue, are stocked in 62"-wide coil and are available in 0.040" x 48" Reynolux flat sheet.




Bone White 
25-35*
68.7¹, 82², 74³




Brite Red 
25-35*
39.4¹, 42², 10³




Cadet Gray 
25-35*
35¹, 36², 34³



Castle Gray 
25-35*
49.4¹, 56², 41³



Pueblo Tan 
25-35*
51.7¹, 60², 48³



Deep Black
20-30*
4.5¹, 0², 5³




Frisco White 
25-35*
69.1¹, 83², 75³



Eastman Blue
45-55*
37¹, 36.2², 17³




Oyster White 
25-35*
67.4¹, 81², 67³



Classic Bronze
20-30*
9.8¹, 2², 7³



Pure White 
25-35*
69.4¹, 83², 75³



Charcoal
25-35*
28.6¹, 28², 8³



Limestone
25-35*
66¹, 56.5², 73.99³



Sandstone
25-35*
82¹, 68.6², 73.7³


Colorweld® 500

30-year warranty
AAMA 2605

SERIES TWO Premium Mica Finishes

All Colorweld 500 Series Two finishes are stocked in 62"-wide coil and are available in 0.040" x 48" Reynolux flat sheet.



Pewter 
15-25*
14.6¹, 10², 19³




Platinum 
20-30*
59.3¹, 70², 57³



Silversmith 
15-30*
58.1¹, 68², 52³



Vancouver Copper 
15-25*
47.4¹, 53², 28³



Daybreak Mica
15-25*
35.9¹, 38², 38³



Medium Bronze
15-25*
63¹, 75², 57³




Champagne Mica
15-25*
29.5¹, 30², 21³




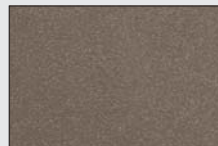
Driftwood Mica
15-25*
9.2¹, 3², 7³




Anodic Satin 
20-30*
53.6¹, 61², 39³



Anodic Clear 
20-30*
56.2¹, 65², 54³



Anodic Bronze 
15-25*
42.9¹, 47², 23³

Anodic finishes are formulated to closely resemble popular anodized colors used on curtain wall profiles.

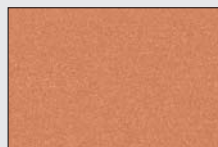
Colorweld® 500XL

30-year warranty
AAMA 2605

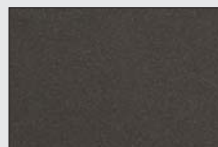
SERIES THREE Premium 3-coat Metallic Finishes

Compatible with PPG's
DURAPREP® Prep™ 400
graffiti-resistant coating.

All Colorweld 500XL Series Three finishes are stocked in 62"-wide coil and are available in 0.040" x 48" Reynolux flat sheet.




Copper Penny 
25-35*
44.4¹, 48², 24³



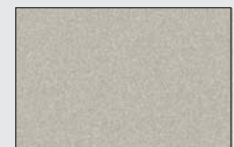
Nightfall Metallic 
20-30*
11.1¹, 2², 8³




Bright Silver Metallic 
15-30*
61¹, 70², 61³




Champagne Metallic 
25-35*
54.3¹, 61², 52³



Titanium 
25-35*
44.2¹, 47², 44³

 Available with the EcoClean™ self-cleaning coating.

 Environment-friendly cool-pigment finish.

* Specular Gloss Reading

¹ Solar Reflectivity Value (SRV); ASTM C1549

² Solar Reflective Index (SRI); ASTM E1980

³ Light Reflectance Value (LRV); ASTM E1477

reynobond.com
reynobond.com/stockinglist

PrismFX™
(Duragloss® PFX)
Premium Finishes
20-year warranty
AAMA 2604



Autumn Wind



Indian Summer



Silver Gold



Spring Lake

Design Line™
(Duragloss® DL)
20-year warranty
AAMA 2604

WOOD
Premium Finishes



Colonial Red



Embala Brown



Italian Walnut



Mahogany Brown



Scottish Oak

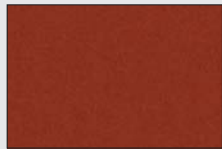


Sunny Pear

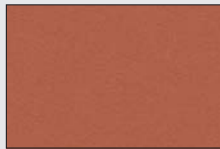


Zebra

MINERAL
Premium Finishes



Terra di Siena



Terra Cotta Mineral

PATINA
Premium Finishes



Copper Patina



Rust Patina

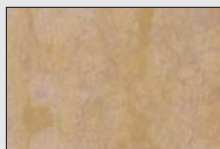


Zinc Patina

STONE
Premium Finishes



Aciero Corten



Apollo Stone

Natural Metals

Premium Metals

The appearance of our Natural Metals may vary with the lot of production.



Zinc



Stainless Steel



Copper



Anodized

Premium Coating

The appearance of our Anodized panels may vary with the lot of production.



Clear Anodized

Colorweld® LF (Clear Coat)

20-year warranty

Compatible with PPG's DURAPREP® Prep™ 400 graffiti-resistant coating.

The appearance of our Colorweld LF finishes may vary with lot of production.



Long Brushed Aluminum
30*



Natural Brushed Aluminum
30*



Natural Brushed Aluminum Gray
30*

Colorweld® Brite (Clear Coat)

10-year reflection warranty



Brite Mirror
87% Reflectivity

Finish Performance Properties

Property	Test Method	Colorweld® 500 Opaque/Mica	Colorweld® 500 XL Metallic	Duragloss® PFX (PrismFX™)	Duragloss® DL (Design Line™)	Colorweld® LF
Specular Gloss (60)	ASTM D523	15–35	25–35	20–60	20–60	<10–80
Gloss Retention	ASTM D523	N/A	N/A	N/A	N/A	20 yrs FLA >80%
Pencil/Film Hardness	ASTM D3363	F-2H	F-2H	F min	F min	F-2H
Coating Flexibility (T-bend)	ASTM D4145	1-T to 2-T; No pick off	1-T to 2-T; No pick off	1-T to 2-T; No pick off	1-T to 2-T; No pick off	1-T to 2-T; No pick off
Reverse Impact (1.5 thickness)	ASTM B2794	Passes	Passes	Passes	Passes	Passes
Salt Spray Resistance 5% Salt Fog @ 95° F	ASTM B117	Passes 4000 hrs	Passes 4000 hrs	Passes 3000 hrs	Passes 3000 hrs	Passes 4000 hrs
Humidity Resistance 100% RH @ 100° F	ASTM D2247	Passes 4000 hrs	Passes 4000 hrs	Passes 1000 hrs	Passes 1000 hrs	Passes 4000 hrs
Color Retention @ 45°, South Florida	ASTM D2244	10 years, Max 5 fade	10 years, Max 5 fade	5 years, Max 5 fade	5 years, Max 5 fade	10 years, Max 5 fade
Chalk Resistance @ 45°, South Florida	ASTM D4214	10 years, >8 chalk	10 years, >8 chalk	5 years, >8 chalk	5 years, >8 chalk	N/A
Film Thickness	ASTM D1400	0.2 mil primer 0.8 mil top coat	0.2 mil primer 0.8 mil color coat 0.5 mil clear coat	0.6 mil primer 0.8 mil base coat 0.7 mil top coat	0.6 mil primer 0.8 mil base coat 0.7 mil top coat	0.6–0.7 mil clear coat



Alcoa Architectural Products

50 Industrial Boulevard
Eastman, GA 31023-4129
Tel. 800 841 7774

reynobond.com or reynolux.com

©2016 Alcoa Architectural Products. Reynobond®, Reynolux®, Colorweld® and Duragloss® are registered trademarks and Design Line™, PrismFX™ and EcoClean™ are trademarks of Alcoa Inc. Kynar 500® is a registered trademark of Arkema Group. Hylar 5000® is a registered trademark of Solvay Solexis. DuraPrep® is a registered trademark and Prep™ is a trademark of PPG Architectural Finishes, Inc.

15AAP1714-A Apr 2016 ver. 1 5000